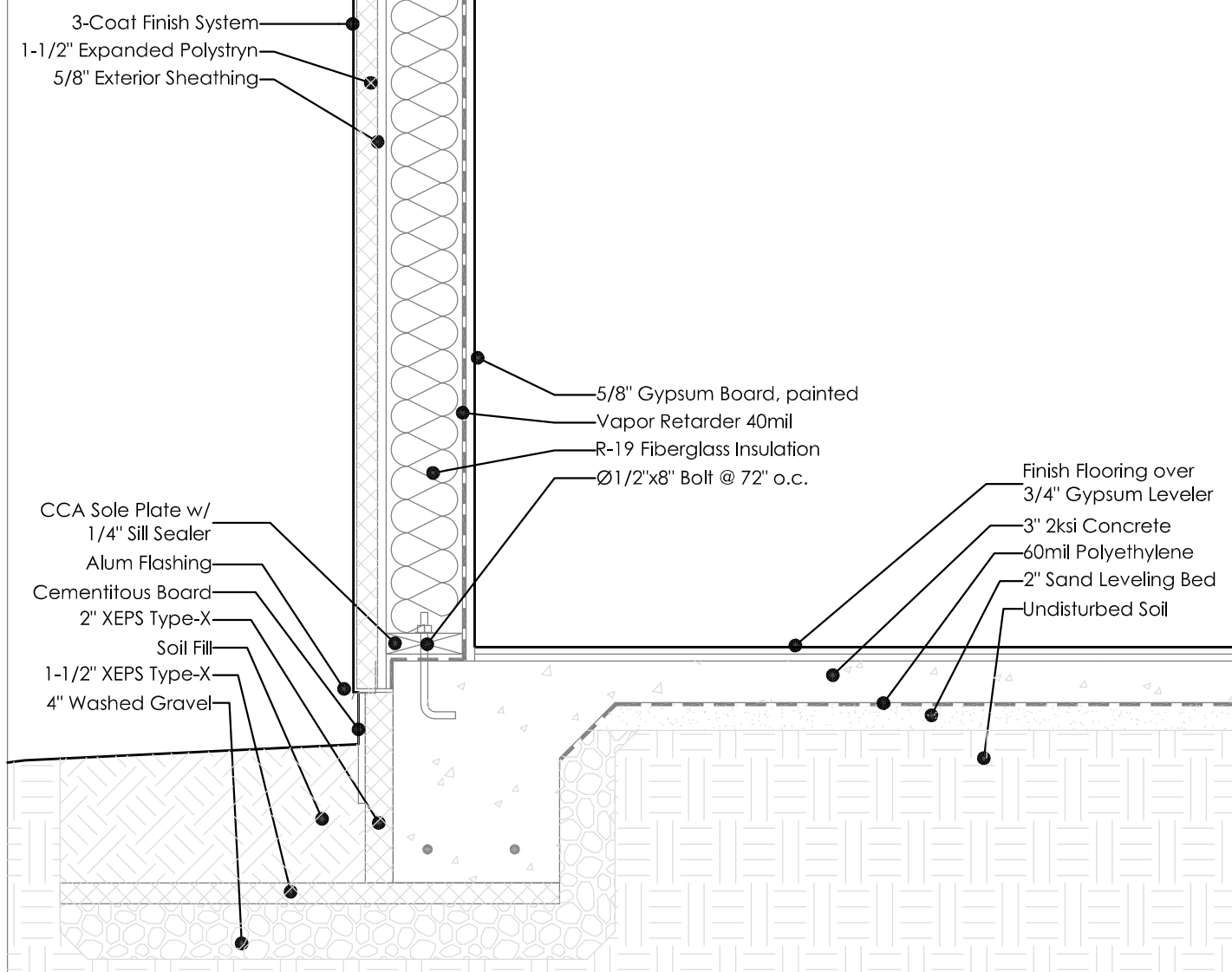


Frost-Protected Shallow Footing



3-Coat Finish System
 1-1/2" Expanded Polystyren
 5/8" Exterior Sheathing

5/8" Gypsum Board, painted
 Vapor Retarder 40mil
 R-19 Fiberglass Insulation
 Ø1/2"x8" Bolt @ 72" o.c.

CCA Sole Plate w/
 1/4" Sill Sealer
 Alum Flashing
 Cementitious Board
 2" XEPS Type-X
 Soil Fill
 1-1/2" XEPS Type-X
 4" Washed Gravel

Finish Flooring over
 3/4" Gypsum Leveler
 3" 2ksi Concrete
 60mil Polyethylene
 2" Sand Leveling Bed
 Undisturbed Soil

**Leon Lauer
 + Associates**

